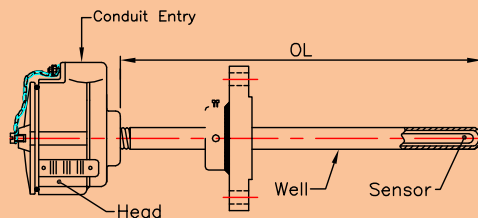


610# Series

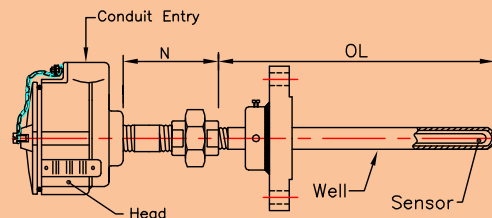
- A Protective Tube
- Built up from seamless tubes, Fixed or adjustable flange.
- Flameproof or weatherproof executions in 316ss or Aluminum.
- Available with "in head" 2-wire temperature Transmitter.

Ms Mi Thermocouple or Resistance Thermometer sensor fitted into a terminal head and provided with or without head extension and a protecting tube would form a typical complete assembly ready for use in the application, where flow and pressure are not a

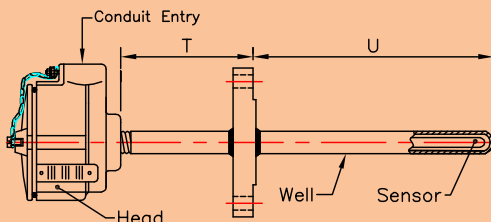
major concern. Protecting tubes are built up from seamless tubes with hot end plugged and TIG welded and a blind Flange is drilled to suit the outer diameter of the tube and TIG welded to it. These are available in standard AISI 300 series stainless steels as well as, in exotic materials such as incolony 800, Inconel, 600, 446ss, and Flanges in ASTM grades A105, A182 and A350 in sizes 3/4" to 2" (Dn20 to DN 50). The standard execution as shown in this leaflet is with plated CS extension and Aluminum head with conduit entry of 1/2" npt and Thermocouples with ungrounded junction unless specified otherwise. head Assembly HA-103 is with CS plated extension and N = 150.



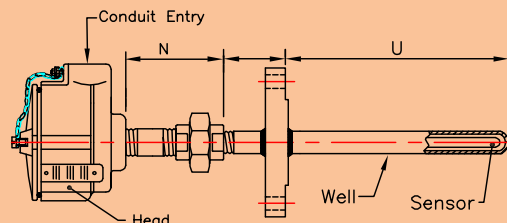
HA 101 - ADJUSTABLE FLANGED



HA 103 - ADJUSTABLE FLANGED



HA 101 - FIXED FLANGED



HA 103 - FIXED FLANGED

Ordering Example - RTD

Model NO:610#-2PT100-3W-6-316-IEC751-CJT1001-1200-C-2-HA104-1/2-SCH40-F304-800-70-AF-1/4-150-BLRF-OP14B,2A,3B

Model	Suffix Codes	Description
610#RTD	610#RTD Assembly
No of Elements	1..... 2.....	Simplex Duplex
Element Type	Pt100A..... Pt100B..... Pt200A..... Pt200B.....	Pt100 RTD Class A tolerance Pt100 RTD Class B tolerance Pt200 RTD Class A tolerance Pt200 RTD Class B tolerance
Number of Wires	2W..... 3W..... 4W.....	2 Wire RTD 3 Wire RTD 4 Wire RTD
Sheath Diameter	6..... 6.35..... 8..... Other Options Available	6 mm DIA 6.35 mm DIA 8 mm DIA
Sheath Material	316..... INC 600..... Other Options Available	SS316 INCONEL 600
Calibration Standard	DIN43760..... IEC751.....	RTD calibration DIN 43760 RTD calibration IEC 60751
CJT Details	CJT 1001..... CJT 1003..... Other Options Available	Spring Loaded Terminal Block OD=41 PCD=33(Water proof) SS Base Plate OD=41 PCD=33
Length Below Base plate XMM	0-5000.....	Length Below Base plate XMM
Head Type	D IP67..... C..... XX.....	Weatherproof with IP67 Certified Flameproof IIC ,IP67
Number of Conduit Entries	1..... 2..... XX.....	Single Entry Two Entries XX
Head Assembly Type	Ha101..... Ha 104..... Ha 108..... Other Options Available	Head Only with T(F) Head- Nipple-Union-Nipple T(M) Head -3 Piece Extension & T(M)
Mounting Threads P	P-1/4NPTM..... P-1/4NPSM..... P-1/4BSPM..... P-1/4BSPTM..... Other Options Available	1/4"NPT(M) 1/4"NPS(M) 1/4"BSP(M) 1/4" BSPT(M)
Well Material	321..... 304..... Other Options Available	SS 321 SS 304
Pipe Size	1/4..... 1/2..... 1..... Other Pipe Sizes Available	1/4" 1/2" 1
Pipe Schedule	SCH40..... SCH80..... Other Pipe Sched.Available	SCH40 SCH80
Flange Material	F321..... F316..... Other Sizes Available	SS321 SS3016
Well Insn len Below Thrds Umm	0-5000.....	Well Insn Len Below Thrds Umm
Length Of Insert/Probe OL MM	0-5000.....	Length of Insert/Probe OL MM
Well Exn Len Includ Thrud Tmm	0.5000.....	Well Exn Len Includ Thrd Tmm
Head Extn length N mm	0-500.....	Head Extn Length N mm
Tube Flanged Conn Type	FF..... AF.....	Fixed Flanged Adjustable Flanged
Flanged Process Conn Size	1/4..... 3/4..... Other Sizes Available	1/4" 3/4"
Flanged Process Conn Rating	150#..... 300#..... 600#.....	150# 300# 600#
Flanged Process Conn Facing	BLRF..... BLRTJ..... Other Sizes AvailabIE	Blind Raised Face Blind ring Type Joint
Option.....	Please Refer Option List



Ordering Example - THERMOCOUPLE

Model NO:610#-MI-2-K-8-XX-316-IEC584-CJT1001-1200-C-2-HA108-1/2NPT-316-1-SCH40-800-1000-50-150-AF-316-11/2"-300-BLRF-OP16,2A

Model	Suffix Codes	Description
610#TC		610#TC Assembly
Insulation Type	MI..... BE.....	Mineral Insulated Ceramic Beaded
Number of Elements	1..... 2.....	Simplex Duplex
Element Type	J..... K..... T.....	Iron Constantan Chromel Alumel Copper Constantan
Sheath Diameter TC	6..... 8..... Other Options Available	6 mm DIA 8 mm DIA
Size Conductor of TC	6AWG..... XX..... Other Options Available	4.1148 mm XX
Sheath Material for TC	316..... 321..... Other Options Available	SS316 SS321
Calibration Standard	ANSIMC96.1..... DIN43710..... IEC60584.....	TC calibration as per ANSIMC 96.1 TC calibration as per DIN 43710 TC calibration as per IEC 60584
Details of CJT	CJT 101..... CJT 1003.....	Spring Loaded TB OD=41 PCD=33 SS Base Plate OD=41 PCD=33
Length Below Base plate XMM	0-5000.....	Length Below Base plate XMM
Head Type	D_IP67..... C..... C_CCOE..... JD..... JC.....	Weatherproof with IP67 Certified Flameproof IIC T6,IP67 Flameproof IIC T6,IP65 Junction Box WP Junction Box FLP IIC
Number of Conduit Entries	1..... 2..... 3..... XX.....	SINGLE ENTRY TWO ENTRIES THREE ENTRIES
Head Assembly Type	Ha101..... Ha 104..... Ha 108..... Other Options Available.....	Head Only with T(F) Head- Nipple-Union-Nipple T(M) Head -3 Piece Extension & T(M)
Mounting Threads P	P-1/4NPTM..... P-1/4BSPTM..... Other Options Available	1/4"NPT(M) 1/4" BSPT(M)
Well Material	321..... 316..... Other Options Available	SS 321 SS 316
Pipe Size	1/2..... 3/4..... 1..... Other pipe sizes available	1/2" 3/4" 1"
Pipe Schedule	SCH40..... SCH80..... Other Pipe Sched.Available	SCH40 SCH80
Well Insn Len Below Thrds Umm	0-5000.....	Well Insn Len Below Thrds Umm
Length of Insert/Probe OL MM	0-5000.....	Length of Insert/Probe OL MM
Well Exn Len Includ Thrud Tmm	0.5000.....	Well Exn Len Includ Thrd Tmm
Head Extn length N mm	0-500.....	Head Extn Length N mm
Tube Flanged Conn Type	FF..... AF.....	Fixed Flanged Adjustable Flanged
Flange Material	F321..... F316..... Othe Sizes Available.....	SS321 SS3016
Flanged Process Conn Size	1/2..... 1..... Other Sizes Available	1/2" 1"
Flanged Process Conn Rating	150#..... 300#..... 600#.....	150# 300# 600#
Flanged Process Conn Facing	BLRF..... BLRTJ..... Other Sizes Available.....	Blind Raised Face Blind ring Type Joint
Option.....		Please Refer Option List

