

550# Series

- A Butt weld design tapered well.
- Flameproof or weatherproof execution in 316SS or Aluminum.
- Safe design as per ASME PTC 19.3
- Available with "in head" 2-wire Temperature Transmitter.

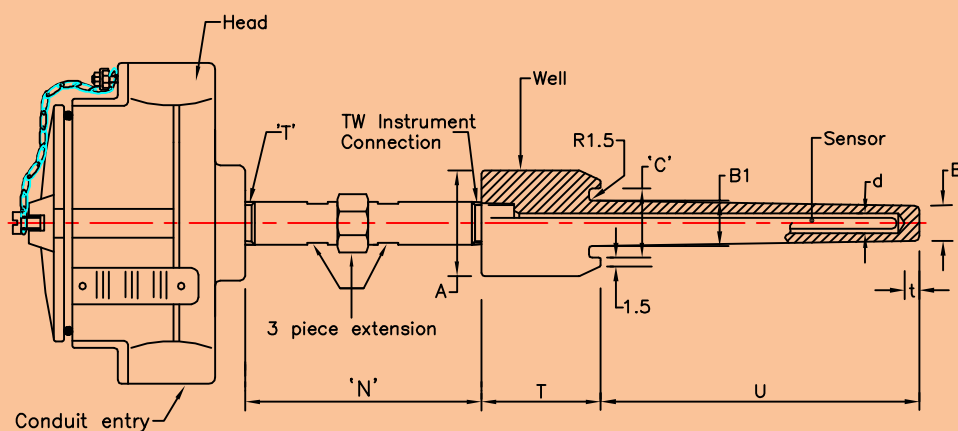
Mi Thermocouple or Resistance Thermometer sensor fitted into a terminal head, and provided with head extension and drilled bar stock weld-in thermowell would form a typical complete assembly ready for use in the application, designed for.



The design of the complete assembly depends on various process parameters, such as, temperature, dynamic pressure, flow velocity, abrasive nature of process fluid, intricate nature of installation and insertion lengths required. High velocity collar can be provided to reduce the suspended length of Thermowell and to meet ASME PTC 19.3 requirement.

Thermowells are available in standard AISI 300 series stainless steels as well as, in exotic materials such as Incoloy 800, Inconel 600, Monel 400.

The Thermowell illustrated in this leaflet is for butt welding to a weldolet and well dimensions given are suitable for weldolet size of 1.5" and 2" and schedule 40 to schedule XXS. The standard execution as shown in this leaflet is with plated CS extension and Aluminum head with conduit entry of 1/2"NPT and Thermocouples with ungrounded junction unless specified otherwise.



Ordering Example - RTD

Model No: 550#-2-Pt100B-3W-6-SS316-IEC751-CJT1001-400-D_IP67-1-HA108-SS316-W-200-75-150-BW1.5"40-30-28-22-7-6-Op 1A,3A,5A,4B,31A,14A

Model	Suffix Codes	Description
550#RTD	550 #RTD Assembly
No of Elements	1.....	Simplex
	2.....	Duplex
	3.....	Triplex
Element Type	Pt100A.....	Pt100 RTD Class A tolerance
	Pt100B.....	Pt100 RTD Class B tolerance
	Pt200A.....	Pt200 RTD Class A tolerance
	Pt200B.....	Pt200 RTD Class B tolerance
	Pt500A.....	Pt500 RTD Class A tolerance
	Pt500B.....	Pt500 RTD Class B tolerance
No of Wires	2W.....	2 Wire RTD
	3W.....	3 Wire RTD
	4W.....	4 Wire RTD
Sheath Dia	6.....	6 mm
	8.....	8 mm
	10.....	10 mm
		(For more options refer table F)
Sheath Material	316.....	SS316
	316L.....	SS316L
	321.....	SS321
	INC 600.....	Inconel 600
Calibration Standard	DIN43760.....	RTD calibration DIN 43760
	IEC751.....	RTD calibration IEC 60751
CJT Details	CJT 201.....	Crimp on Pot and Lead Wire
	CJT 1001.....	Spring Loaded Terminal Block OD=41 PCD=33(Weatherproof)
	CJT 1005.....	Spring Loaded Terminal Block Od=41 PCD=33(Flameproof)
		(For more options refer table G)
Length Below Base Plate (To be specified by Pyro)	X.....	Length Below Base Plate 'X' mm
Head Type	D_IP67.....	Weatherproof With IP67 Certified as per IS/IEC 60529
	C.....	Flameproof Exd IIC T6,IP67 as per IS/IEC 60079
		(For more options refer table H)
No Of Conduit Entries	01-10.....	Select 2 or 1 for Terminal Head & 1-10 for Junction Box
	XX.....	Not Applicable
Head Assembly Type	HA108.....	Head-3 Piece Extension & T(M) (Made in Barstock)
	HA112.....	Head-3 Piece Extension with Spring Loading & T(M)
	HA113.....	Head-3 Piece Extension with Sealing Arrangement & T(M)
		(For more options refer table E)
Well Material	321.....	SS 321
	316.....	SS 316
	INC 600.....	Inconel 600
		(Other options available).
Well Type Weld In	W.....	Weld-in
Well Insertion Length Below Threads	U.....	Well Insertion Length below Threads U mm
Well Extension Length Including Threads	T.....	Well Extension Length Including Threads 'T' mm
Head extension length	N.....	Head extension length 'N' mm
Weld In Process Connection Weldolet Type	BW2"XXS.....	2" SCH XXS A=60 C=38
	BW1.5"40.....	1.5" SCH 40 A=48 C=41
		(Other options available)
Rod Diameter	A.....	Rod Diameter 'A' mm
Top End Diameter	B1.....	Top End Diameter 'B1' mm
Hot End Diameter	B.....	Hot End Diameter 'B' mm
Bore ID	d.....	Bore ID 'd' mm
Tip Thickness	t.....	Tip Thickness 't' mm
Options.....		(For options refer table A)

*Please consult our marketing team for any non standard dimensions. Note: For field which are not applicable, select 'XX' or enter '0' whichever is mentioned.

INDIA

PYRO ELECTRIC INSTRUMENTS GOA PVT. LTD.

G/B, Hill Crown, College Road, Mapuca - Goa 403 507 India.

Tel : +91 832 2252719/2264391, Fax : +91 832 2263294, Email : marketing@pyro-electric.in

PYRO ELECTRIC®

An ISO 9001: 2008 Certified Company

Ordering Example - THERMOCOUPLE

Model No: 550#-2-Pt100B-3W-6-SS316-IEC751-CJT1001-400-D_IP67-1-HA108-SS316-W-200-75-150-BW1.5"40-30-28-22-7-6-Op 1A,3A,5A,4B,31A,14A

Model	Suffix Codes	Description
550#TC	550#TC Assembly
Thermocouple Type	MI.....	Mineral Insulated
	BE.....	Ceramic Beaded
Number of Elements	1.....	Simplex
	2.....	Duplex
	3.....	Triplex
Element Type	J.....	Iron Constantan
	K.....	Chromel Alumel
	T.....	Copper Constantan
	E.....	Chromel Constantan
	N.....	Nicrosil Nisil
	R.....	PTRH13%_PT
	S.....	PTRH10%_PT
	C.....	PTRH30%_PTRH6% Tugstan 5% Rhenium –Tugstan 26% Rhenium
Sheath Diameter of TC	6.....	6 mm
	8.....	8 mm
	9.5.....	9.5 mm (For more option refer table F)
Size of Conductor of TC	16AWG.....	1.29032 mm
	18AWG.....	1.02362 mm
	24AWG.....	0.51054 mm
	XX.....	Not Applicable (For more options refer table C)
Sheath Material for TC	316.....	SS316
	316L.....	SS316L
	321.....	SS321
	INC 600.....	Inconel 600 (For more options refer table D)
Calibration Standard	ANSIMC96.1.....	TC calibration as per ANSIMC 96.1
	DIN43710.....	TC calibration as per DIN 43710
	IEC60584.....	TC calibration as per IEC 60584
Details of CJT	CJT 201.....	Crimp on Pot and Lead Wire
	CJT 1001.....	Spring Loaded Terminal Block OD=41 PCD=33(Weatherproof)
	CJT 1005.....	Spring Loaded Terminal Block Od=41 PCD=33(Flameproof) (For more options refer table G)
Length Below Base Plate (To be specified by Pyro)	X.....	Length Below Base Plate 'X' mm
Head Type	D_IP67.....	Weatherproof With IP67 Certified as per IS/IEC 60529
	C.....	Flameproof Exd IIC T6,IP67 as per IS/IEC 60079 (For more options refer table H)
Number of Conduit Entries	01-10.....	Select 2 or 1 for Terminal Head & 1-10 for Junction Box
	XX.....	Not Applicable
Head Assembly Type	HA108.....	Head-3 Piece Extension & T(M) (Made in Barstock)
	HA112.....	Head-3 Piece Extension with Spring Loading & T(M)
	HA113.....	Head-3 Piece Extension with Sealing Arrangement & T(M) (For more options refer table E)
Well Material	321.....	SS 321
	316.....	SS 316
	INC 600.....	Inconel 600 (Other options available)
Well Type Weld In	W.....	Weld-in
Well Insertion Length Below Threads	U.....	Well Insertion Length below Threads U mm
Well Extension Legth Including Threads	T.....	Well Extension Legth Including Threads 'T' mm
Head extension length	N.....	Head extension length 'N' mm
Weld In Process Connection Weldolet Type	BW2*XXS.....	2" SCH XXS A=60 C=38
	BW1.5"40.....	1.5" SCH 40 A=48 C=41 (Other options available)
Rod Diameter	A.....	Rod Diameter 'A' mm
Top End Diameter	B1.....	Top End Diameter 'B1' mm
Hot End Diameter	B.....	Hot End Diameter 'B' mm
Velocity Collar	OD.....	Velocity Collar OD (Write 0 if Velocity Collar Not Applicable)
Bore ID	d.....	Bore ID 'd' mm
Tip Thickness	t.....	Tip Thickness 't' mm
Options.....		(For Options Refer Table A)

*Please consult our marketing team for any non standard dimensions. Note: For field which are not applicable, select 'XX' or enter '0' whichever is mentioned.)