

# 530# Series

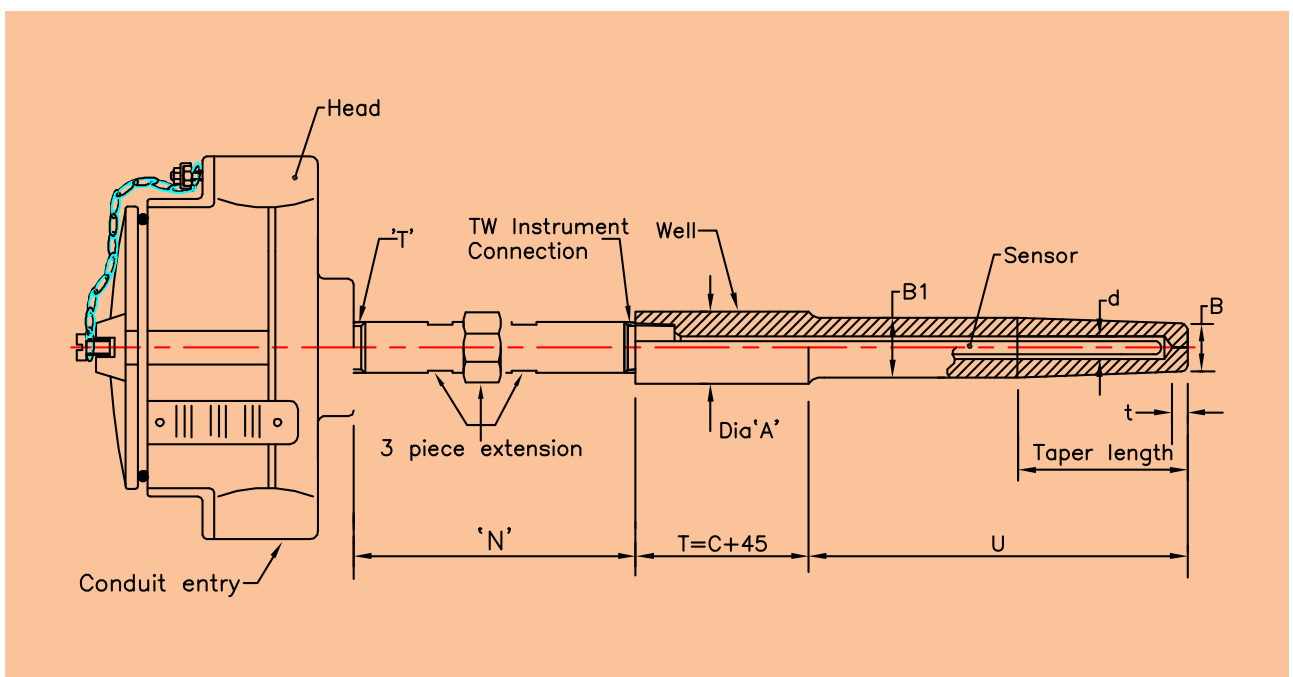
- A Weld-in Straight and tapered Shank well.
- Flameproof or weatherproof execution in 316SS or Aluminium.
- Safe design as per ASME PTC 19.3
- Available with "in head"
- 2-wire Temperature Transmitter.

The Thermocouple or RTD assembly illustrated in this leaflet is with a weld in Thermowell having straight shank with a tapered tail.

These wells are provided with a cylindrical head suitable for welding into a socket weld or a straight through socket. High velocity collar can be provided to reduce the suspended length of Thermowell and to meet ASME PTC 19.3 requirement.

Thermowells are available in standard AISI 300 series stainless steels as well as, in exotic materials such as Incoloy 800, Inconel 600, Monel 400, Hastelloy alloys C and B.

The standard execution as shown in this leaflet is with plated CS extension and Aluminum head with conduit entry of 1/2"NPT and Thermocouples with ungrounded junction unless specified otherwise. Define dimension B1 same as dimension 'B', when a fully straight shank well is required.



**Ordering Example - RTD**

Model No: 530#-MI-2-K-6-20AWG-SS316-IEC584-CJT1001-400-D\_IP67-1-HA108-SS316-W-200-0-75-150-30-28-22-60-0-0-7-6-Op 1A,3A,5A,4B,31A,15B,16B

| Model  | Suffix Codes   | Description   |
|--|--|---|
| 530#RTD  |  | 530#RTD Assembly  |
| No of Elements                                       | 1.....<br>2.....<br>3.....   | Simplex<br>Duplex<br>Triplex  |
| Element Type   | Pt100A.....<br>Pt100B.....<br>Pt200A.....<br>Pt200B.....<br>Pt500A.....<br>Pt500B..... | Pt100 RTD Class A tolerance<br>Pt100 RTD Class B tolerance<br>Pt200 RTD Class A tolerance<br>Pt200 RTD Class B tolerance<br>Pt500 RTD Class A tolerance<br>Pt500 RTD Class B tolerance              |
| No of Wires  | 2W.....<br>3W.....<br>4W.....  | 2 Wire RTD<br>3 Wire RTD<br>4 Wire RTD  |
| Sheath Dia   | 6.....<br>8.....<br>10.....  | 6 mm<br>8 mm<br>10 mm<br>(For more options refer table F)   |
| Sheath Material                                      | 316.....<br>316L.....<br>321.....<br>INC 600.....                                      | SS316<br>SS316L<br>SS321<br>Inconel 600   |
| Calibration Standard                                 | DIN43760.....<br>IEC751.....   | RTD calibration DIN 43760<br>RTD calibration IEC 60751  |
| CJT Details  | CJT 201.....<br>CJT 1001.....<br>CJT 1005.....   | Crimp on Pot and Lead Wire<br>Spring Loaded Terminal Block OD=41 PCD=33(Weatherproof)<br>Spring Loaded Terminal Block Od=41 PCD=33(Flameproof)<br>(For more options refer table G)                  |
| Length Below Base Plate<br>(To be specified by Pyro) | X.....   | Length Below Base Plate 'X' mm  |
| Head Type  | D_IP67.....<br>C.....  | Weatherproof With IP67 Certified as per IS/IEC 60529<br>Flameproof Exd IIC T6,IP67 as per IS/IEC 60079<br>(For more options refer table H)  |
| No Of Conduit Entries                                | 01-10.....<br>XX.....  | Select 2 or 1 for Terminal Head & 1-10 for Junction Box<br>Not Applicable   |
| Head Assembly Type                                   | HA108.....<br>HA112.....<br>HA113.....   | Head-3 Piece Extension & T(M) (Made in Barstock)<br>Head-3 Piece Extension with Spring Loading & T(M)<br>Head-3 Piece Extension with Sealing Arrangement & T(M)<br>(For more options refer table E) |
| Well Material  | 321.....<br>316.....<br>INC 600.....   | SS 321<br>SS 316<br>Inconel 600<br>(Other options available)  |
| Well Type Weld In                                    | W.....   | Weld-in   |
| Well Insertion Length Below Threads                  | U.....   | Well Insertion Length Below Threads 'U' mm  |
| Safe Length Below Collar                             | U1.....  | Well Insertion 'U1' mm<br>(Write 0 if Velocity Collar Not Applicable)   |
| Well Extension Length Including Threads              | T.....   | Well Extension Length Including Threads 'T' mm  |
| Head extension length                                | N.....   | Head extension length 'N' mm  |
| Rod Diameter   | A.....   | Rod Diameter 'A' mm   |
| Top End Diameter                                     | B1.....  | Top End Diameter 'B1' mm  |
| Hot End Diameter                                     | B.....   | Hot End Diameter 'B' mm   |
| Step Length  | 0-500(Define Dia between 0 to 500).....  | Step Length   |
| Tapered Length For Thermowell                        | 0-500(Define Dia between 0 to 500).....  | Tapered Length for Thermowell   |
| Velocity Collar                                      | OD.....  | Velocity Collar OD<br>(Write 0 if Velocity Collar Not Applicable)   |
| Velocity Collar Thickness                            | Thk.....   | Velocity Collar Thickness<br>(Write 0 if Velocity Collar Not Applicable)  |
| Bore ID  | d.....   | Bore ID 'd' mm  |
| Tip Thickness  | t.....   | Tip Thickness 't' mm  |
| Options.....   |  | (For options refer table A)   |

\*Please consult our marketing team for any non standard dimensions. Note: For field which are not applicable, select 'XX' or enter '0' whichever is mentioned.

**INDIA**

**PYRO ELECTRIC INSTRUMENTS GOA PVT. LTD.**

G/B, Hill Crown, College Road, Mapuca - Goa 403 507 India.

Tel : +91 832 2252719/2264391, Fax : +91 832 2263294, Email : marketing@pyro-electric.in

**PYRO ELECTRIC®**

*✓ We sense it the best*

Temperature • Flow • Heating • Level • Pressure • Disposable Probes

**Ordering Example - THERMOCOUPLE**

Model No: 530#-MI-2-K-6-20AWG-SS316-IEC584-CJT1001-400-D\_IP67-1-HA108-SS316-W-200-0-75-150-30-28-22-60-0-0-7-6-Op 1A,3A,5A,4B,31A,15B,16B

| Model  | Suffix Codes   | Description   |
|--|--|---|
| 520#TC   | .....  | 520#TC Assembly   |
| Thermocouple Type                                    | MI.....<br>BE.....   | Mineral Insulated<br>Ceramic Beaded   |
| Number of Elements                                   | 1.....<br>2.....<br>3.....   | Simplex<br>Duplex<br>Triplex  |
| Element Type   | J.....<br>K.....<br>T.....<br>E.....<br>N.....<br>R.....<br>S.....<br>B.....<br>C..... | Iron Constantan<br>Chromel Alumel<br>Copper Constantan<br>Chromel Constantan<br>Nicrosil Nisil<br>PTRH13%_PT<br>PTRH10%_PT<br>PTRH30%_PTRH6%<br>Tugstan 5% Rhenium –Tugstan 26% Rhenium             |
| Sheath Diameter of TC                                | 6.....<br>8.....<br>9.5.....   | 6 mm<br>8 mm<br>9.5 mm (For more option refer table F)  |
| Size of Conductor of TC                              | 16AWG.....<br>18AWG.....<br>24AWG.....<br>XX.....                                      | 1.29032 mm<br>1.02362 mm<br>0.51054 mm<br>Not Applicable (For more options refer table C)   |
| Sheath Material for TC                               | 316.....<br>316L.....<br>321.....<br>INC 600   | SS316<br>SS316L<br>SS321<br>Inconel 600 (For more options refer table D)  |
| Calibration Standard                                 | ANSIMC96.1.....<br>DIN43710.....<br>IEC60584.....                                      | TC calibration as per ANSIMC 96.1<br>TC calibration as per DIN 43710<br>TC calibration as per IEC 60584   |
| Details of CJT                                       | CJT 201.....<br>CJT 1001.....<br>CJT 1005.....   | Crimp on Pot and Lead Wire<br>Spring Loaded Terminal Block OD=41 PCD=33(Weatherproof)<br>Spring Loaded Terminal Block Od=41 PCD=33(Flameproof)<br>(For more options refer table G)                  |
| Length Below Base Plate<br>(To be specified by Pyro) | X.....   | Length Below Base Plate 'X' mm  |
| Head Type  | D_IP67.....<br>C.....  | Weatherproof With IP67 Certified as per IS/IEC 60529<br>Flameproof Exd IIC T6,IP67 as per IS/IEC 60079<br>(For more options refer table H)  |
| Number of Conduit Entries                            | 01-10.....<br>XX.....  | Select 2 or 1 for Terminal Head & 1-10 for Junction Box<br>Not Applicable   |
| Head Assembly Type                                   | HA108.....<br>HA112.....<br>HA113.....   | Head-3 Piece Extension & T(M) (Made in Barstock)<br>Head-3 Piece Extension with Spring Loading & T(M)<br>Head-3 Piece Extension with Sealing Arrangement & T(M)<br>(For more options refer table E) |
| Well Material  | 321.....<br>316.....<br>INC 600.....   | SS 321<br>SS 316<br>Inconal 600<br>(Other options available)  |
| Well Type Weld In                                    | W.....   | Weld-in   |
| Well Insertion Length Below Threads                  | U.....   | Well Insertion Length below Threads 'U' mm  |
| Safe Length Below Collar                             | U1.....  | Well Insertion 'U1' mm<br>(Write 0 if Velocity Collar Not Applicable)   |
| Well Extension Length Including Threads              | T.....   | Well Extension Length Including Threads 'T' mm  |
| Head extension length                                | N.....   | Head extension length 'N' mm  |
| Rod Diameter   | A.....   | Rod Diameter 'A' mm   |
| Top End Diameter                                     | B1.....  | Top End Diameter 'B1' mm  |
| Hot End Diameter                                     | B.....   | Hot End Diameter 'B' mm   |
| Tapered Length For Thermowell                        | 0-500(Define Dia between 0 to 500)   | Tapered Length for Thermowell   |
| Velocity Collar                                      | OD.....  | Velocity Collar OD<br>(Write 0 if Velocity Collar Not Applicable)   |
| Velocity Collar Thickness                            | Thk.....   | Velocity Collar Thickness<br>(Write 0 if Velocity Collar Not Applicable)  |
| Bore ID  | d.....   | Bore ID 'd' mm  |
| Tip Thickness  | t.....   | Tip Thickness 't' mm  |
| Options.....   |  | (For Options Refer Table A)   |

\*Please consult our marketing team for any non standard dimensions. Note: For field which are not applicable, select 'XX' or enter '0' whichever is mentioned.

**INDIA**

**PYRO ELECTRIC INSTRUMENTS GOA PVT. LTD.**

G/B, Hill Crown, College Road, Mapuca - Goa 403 507 India.

Tel : +91 832 2252719/2264391, Fax : +91 832 2263294, Email : marketing@pyro-electric.in

**PYRO ELECTRIC®**

*✓ We sense it the best*

Temperature • Flow • Heating • Level • Pressure • Disposable Probes