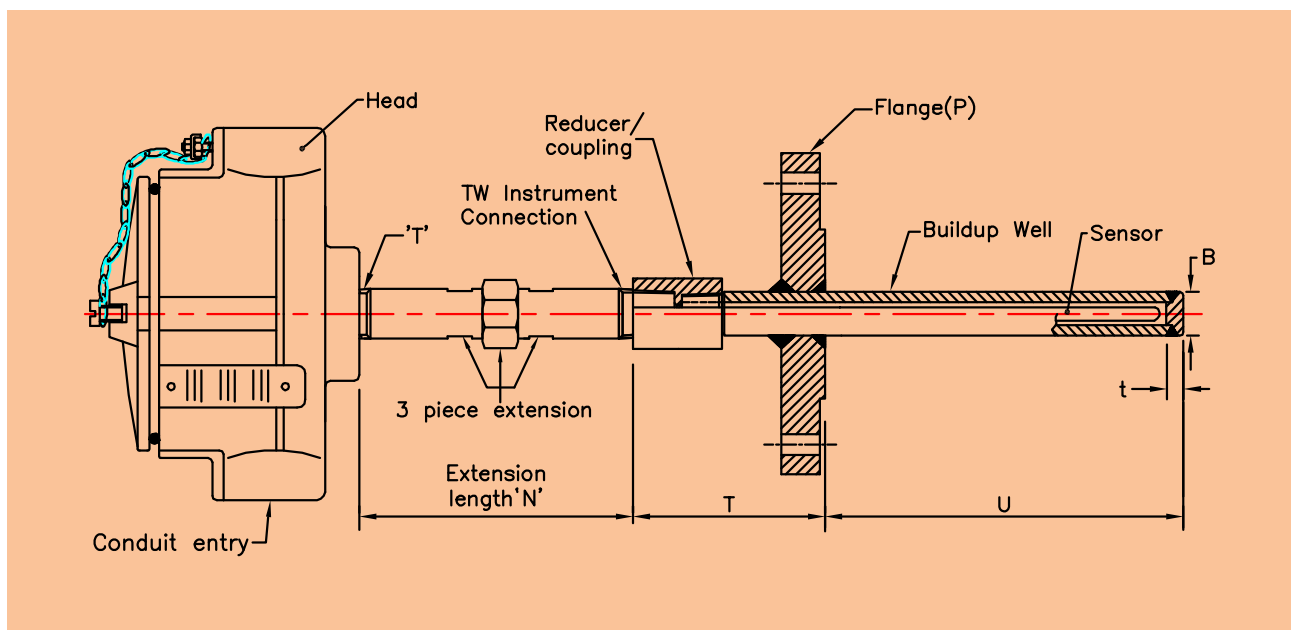




- **A Protecting Tube.**
- **Built up from seamless tubes, fixed or adjustable Flange.**
- **Flameproof or weatherproof execution in 316SS or Aluminium.**
- **Available with "in head" 2-wire Temperature Transmitter.**

Mi Thermocouple or Resistance Thermometer sensor fitted into a terminal head, and provided with or without head extension and a protecting tube would form a typical complete assembly ready for use in the applications, where flow and pressure are not a major concern. Protecting tubes are built up from seamless tubes with hot end plugged and TIG welded and a blind Flange is drilled to suit the outer diameter of the tube and TIG welded to it. These are available in standard AISI 300 series stainless steels as well as, in exotic materials such as Incoloy 800, Inconel 600, 446 SS, and Flanges in ASTM grades A105, A182 and A350 in sizes as required. The standard execution as shown in this leaflet is with plated CS extension and Aluminium head with conduit entry of 1/2"NPT and Thermocouples with ungrounded junction unless specified otherwise.



Ordering Example - RTD

Model No: 470#-2-Pt100B-3W-6-SS316-IEC751-CJT1001-400-D_IP67-1-HA108-SS316-11/2"-Sch40-F316-250-0-90-150-1/2"-150#-RF-32-21-316-7-6-Op 1A,3A,5A,4B,31A,14A

Model		Suffix Codes	Description
470#RTD			470#RTD Assembly
No of Elements	1.....		Simplex
	2.....		Duplex
	3.....		Triplex
Element Type	Pt100A.....		Pt100 RTD Class A tolerance
	Pt100B.....		Pt100 RTD Class B tolerance
	Pt200A.....		Pt200 RTD Class A tolerance
	Pt200B.....		Pt200 RTD Class B tolerance
	Pt500A.....		Pt500 RTD Class A tolerance
	Pt500B.....		Pt500 RTD Class B tolerance
No of Wires	2W.....		2 Wire RTD
	3W.....		3 Wire RTD
	4W.....		4 Wire RTD
Sheath Dia	6.....		6 mm
	8.....		8 mm
	10.....		10 mm (For more options refer table F)
Sheath Material	316.....		SS316
	316L.....		SS316L
	321.....		SS321
	INC 600.....		Inconel 600
Calibration Standard	DIN43760.....		RTD calibration DIN 43760
	IEC751.....		RTD calibration IEC 60751
CJT Details	CJT 201.....		Crimp on Pot and Lead Wire
	CJT 1001.....		Spring Loaded Terminal Block OD=41 PCD=33(Weatherproof)
	CJT 1005.....		Spring Loaded Terminal Block Od=41 PCD=33(Flameproof) (For more options refer table G)
Length Below Base Plate* (To be specified by Pyro)	X.....		Length Below Base Plate 'X' mm
Head Type	D_IP67.....		Weatherproof With IP67 Certified as per IS/IEC 60529
	C.....		Flameproof Exd IIC T6,IP67 as per IS/IEC 60079 (For more options refer table H)
No Of Conduit Entries	01-10..... XX		Select 2 or 1 for Terminal Head & 1-10 for Junction Box Not Applicable
Head Assembly Type	HA108.....		Head-3 Piece Extension & T(M) (Made in Barstock)
	HA112.....		Head-3 Piece Extension with Spring Loading & T(M)
	HA113.....		Head-3 Piece Extension with Sealing Arrangement & T(M) (For more options refer table E)
Pipe Size	1/2.....		1/2"
	1/4.....		1/4"
	3/8.....		3/8" (Other options available)
Lpipe Schedule	SCH40.....		SCH40
	SCH80.....		SCH80 (Other options available)
Flange Material	F321.....		SS 321
	F316.....		SS316
	F316L.....		SS 316L
Well Insertion Length Below Flange*	U.....		Well Insertion Length Below Flange 'U' mm
Length of End Portion in Barstock*	U2.....		Length of End Portion in Barstock 'U2' mm
Well Extension Length Including Flange*	T.....		Well extension length including Flange 'T' mm
Head Extension Length*	N.....		Head extension length 'N' mm
Flanged Process Connection Size	1.....		1" ANSI
	1.5.....		1.5" ANSI
	2.....		2" ANSI (Other options available)
Flanged Process Connection Rating	150#.....		150# as per B16.5
	300#.....		300# as per B16.5
	600#.....		600# as per B16.5
	900#.....		900# as per B16.5
	1500#.....		1500# as per B16.5
	2500#.....		2500# as per B16.5
Flanged Process Connection Facing	BLRF.....		Blind raised face
	BLRTJ.....		Blind ring type joint
	SORF.....		Slip on raised face (Other options available)
Rod Diameter*	A.....		Rod Diameter 'A' mm
Hot End Diameter*	B.....		Hot End Diameter 'B' mm
TW Boss Material	310.....		SS310
	321.....		SS321
	316.....		SS316 (Other options available)
Bore ID*	d.....		Bore ID 'd' mm
Tip Thickness*	t.....		Tip Thickness 't' mm
Options.....			(For options Refer table A)

*Please consult our marketing team for any non standard dimensions. Note: For field which are not applicable, select 'XX' or enter '0' whichever is mentioned.

INDIA

PYRO ELECTRIC INSTRUMENTS GOA PVT. LTD.

G/B, Hill Crown, College Road, Mapuca - Goa 403 507 India.

Tel : +91 832 2252719/2264391, Fax : +91 832 2263294, Email : marketing@pyro-electric.in



PYRO ELECTRIC®

We sense it the best

Temperature • Flow • Heating • Level • Pressure • Disposable Probes

Ordering Example - THERMOCOUPLE

Model No: 470#-MI-2-K-6-18AWG-316-IEC584-CJT1001-400-D-IP67-1-HA108-3161/2"Sch40-F316-250-0-90-150-1/2"150#RF-32-316-16-7-6-Op 1A,3A,5A,4B,31A,15B,16B

Model	Suffix Codes	Description
470#TC		470#TC Assembly
Thermocouple Type	MI..... BE.....	Mineral Insulated Ceramic Beaded
Number of Elements	1..... 2..... 3.....	Simplex Duplex Triplex
Element Type	J..... K..... T..... E..... N..... R..... S..... B..... C.....	Iron Constantan Chromel Alumel Copper Constantan Chromel Constantan Nicrosil Nilil PTRH13%_PT PTRH10%_PT PTRH30%_PTRH6% TU 5% Rhenium -TU 26% Rhenium
Sheath Diameter of TC	6..... 8..... 9.5.....	6 mm 8 mm 9.5 mm (For more option refer table F)
Size of Conductor of TC	16AWG..... 18AWG..... 24AWG..... XX.....	1.29032 mm 1.02362 mm 0.51054 mm Not Applicable (For more options refer table C)
Sheath Material for TC	316..... 316L..... 321..... INC 600.....	SS316 SS316L SS321 Inconel 600 (For more options refer table D)
Calibration Standard	ANSIMC96.1..... DIN43710..... IEC60584.....	TC calibration as per ANSIMEC 96.1 TC calibration as per DIN 43710 TC calibration as per IEC 60584
Details of CJT	CJT 201..... CJT 1001..... CJT 1005.....	Crimp on Pot and Lead Wire Spring Loaded Terminal Block OD=41 PCD=33(Weatherproof) Spring Loaded Terminal Block Od=41 PCD=33(Flameproof) (For more options refer table G)
Length Below Base Plate* (To be specified by PYro)	X.....	Length Below Base Plate 'X' mm
Head Type	D_IP67..... C.....	Weatherproof With IP67 Certified as per IS/IEC 60529 Flameproof Exd IIC T6,IP67 as per IS/IEC 60079 (For more options refer table H)
Number of Conduit Entries	01-10..... XX.....	Select 2 or 1 for Terminal Head & 1-10 for Junction Box Not Applicable
Head Assembly Type	HA108..... HA112..... HA113.....	Head-3 Piece Extension & T(M) (Made in Barstock) Head-3 Piece Extension with Spring Loading & T(M) Head-3 Piece Extension with Sealing Arrangement & T(M) (For more options refer table E)
Well Material	321..... 316..... INC 600.....	SS 321 SS 316 Inconal 600 (Other options available)
Pipe Size	1/2..... 1/4..... 3/8.....	1/2" 1/4" 3/8" (Other options available)
Pipe Schedule	SCH40..... SCH80.....	SCH40 SCH80 (Other options available)
Flange Material	F321..... F316..... F316L.....	SS 321 SS316 SS 316L (Other options available)
Well Insertion Length Below Flange*	U.....	Well Insertion Length Below Flange 'U' mm
Length of End Portion in Barstock*	U2.....	Length of End Portion in Barstock 'U2' mm
Well extension length including Flange*	T.....	Well extension length including Flange 'T' mm
Head extension length*	N.....	Head extension length 'N' mm
Flanged Process Connection Size	1..... 1.5..... 2.....	1" ANSI 1.5" ANSI 2" ANSI (Other options available)
Flanged Process Connection Rating	150#..... 300#..... 600#..... 900#..... 1500#..... 2500#.....	150# as per B16.5 300# as per B16.5 600# as per B16.5 900# as per B16.5 1500# as per B16.5 2500# as per B16.5
Flanged Process Connection Facing	BLRF..... BLRTJ..... SORF..... LPJ.....	Blind raised face Blind ring type joint Slip on raised face Lap joint raised face
Rod Diameter*	A.....	Rod Diameter 'A' mm
TW Boss Material	310..... 321..... 316.....	SS310 SS321 SS316 (Other options available)
Hot End Diameter*	B.....	Hot End Diameter 'B' mm
Bore ID*	d.....	Bore ID 'd' mm
Tip Thickness*	t.....	Tip Thickness 't' mm
Options.....		(For options refer table A)

*Please consult our marketing team for any non standard dimensions. Note: For field which are not applicable, select 'XX' or enter '0' whichever is mentioned.)

INDIA

PYRO ELECTRIC INSTRUMENTS GOA PVT. LTD.

G/B, Hill Crown, College Road, Mapuca - Goa 403 507 India.

Tel : +91 832 2252719/2264391, Fax : +91 832 2263294, Email : marketing@pyro-electric.in



PYRO ELECTRIC®

We sense it the best

Temperature • Flow • Heating • Level • Pressure • Disposable Probes