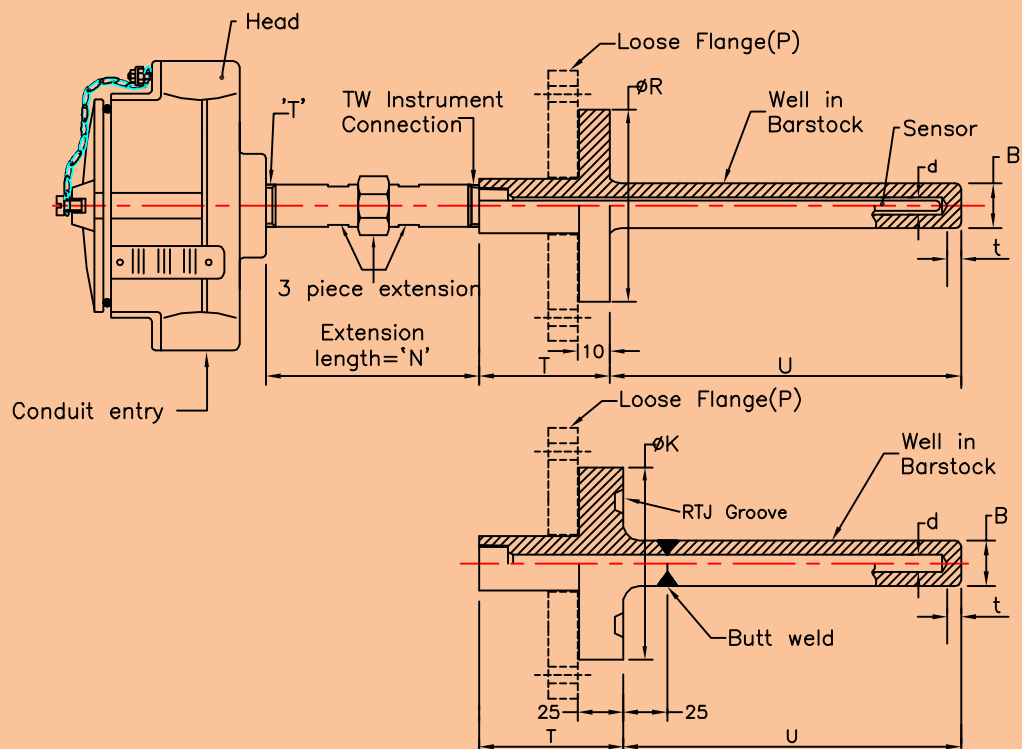


460# Series

- A Van Stone Thermowell with or without weld joints.
- Flameproof or weatherproof execution in 316SS or Aluminium.
- Safe design as per ASME PTC 19.3
- Available with "in head" 2-wire Temperature Transmitter.
- Raised face or RTJ facing.
- Mounting Flange in A105 or A182 F316.
- 100% radiography for weld joints.
- PWHT.
- Hardness to NACE MR-01-75
- Ferrite Number between 3 and 10.



For highly corrosive services, Thermowells without a weld joint are recommended. If weld joint cannot be avoided, full penetration weld is carried out and checked by 100% radiography test. The design shown in this leaflet fulfills this criteria. Thermowells can also be offered with PWHT of weld joint, hardness check as per NACE MR-01-75, DP test, hydro test and ferrite number test.



Ordering Example - RTD

Model No: 460#-Pt100B-3W-6-SS316-IEC751-CJT1001-400-D_IP67-1-HA108-SS316-F316-250-80-150-11/2"-150-RF-75-72-2-26-21-7-6-Op 1A,3A,5A,4B,31A,15B,16B

Model	Suffix Codes	Description
460#RTD		460#RTD Assembly
No of Elements	1.....	Simplex
	2.....	Duplex
	3.....	Triplex
Element Type	Pt100A.....	Pt100 RTD Class A tolerance
	Pt100B.....	Pt100 RTD Class B tolerance
	Pt200A.....	Pt200 RTD Class A tolerance
	Pt200B.....	Pt200 RTD Class B tolerance
	Pt500A.....	Pt500 RTD Class A tolerance
	Pt500B.....	Pt500 RTD Class B tolerance
No of Wires	2W.....	2 Wire RTD
	3W.....	3 Wire RTD
	4W.....	4 Wire RTD
Sheath Dia	6.....	6 mm
	8.....	8 mm
	10.....	10 mm (For more options refer table F)
Sheath Material	316.....	SS316
	316L.....	SS316L
	321.....	SS321
	INC 600.....	Inconel 600
Calibration Standard	DIN43760.....	RTD calibration DIN 43760
	IEC751.....	RTD calibration IEC 60751
CJT Details	CJT 201.....	Crimp on Pot and Lead Wire
	CJT 1001.....	Spring Loaded Terminal Block OD=41 PCD=33(Weatherproof)
	CJT 1005.....	Spring Loaded Terminal Block Od=41 PCD=33(Flameproof) (For more options refer table G)
Length Below Base Plate (To be specified by Pyro)	X.....	Length Below Base Plate Xmm
Head Type	D_IP67.....	Weatherproof With IP67 Certified as per IS/IEC 60529
	C.....	Flameproof Exd IIC T6,IP67 as per IS/IEC 60079 (For more options refer table H)
No Of Conduit Entries	01-10..... XX	Select 2 or 1 for Terminal Head & 1-10 for Junction Box Not Applicable
Head Assembly Type	HA108.....	Head-3 Piece Extension & T(M) (Made in Barstock)
	HA112.....	Head-3 Piece Extension with Spring Loading & T(M)
	HA113.....	Head-3 Piece Extension with Sealing Arrangement & T(M) (For more options refer table E)
Well Material	321.....	SS 321
	316.....	SS 316
	INC 600.....	Inconel 600 (Other options available)
Flange Material	F321.....	SS 321
	F316.....	SS316
	F316L.....	SS 316L (Other options available)
Well Insertion Length Below RF / RTJ Collar	U.....	Well Insertion Length Below Flange 'U' mm
Safe Length Below Velocity Collar	U1.....	Well Insertion U1 mm (Write 0 if velocity collar not applicable)
Well Extension Length Including RF / RTJ Collar	T.....	Well extension length including Flange 'T' mm
Head Extension Length	N.....	Head extension length 'N' mm
Flanged Process Connection Size	1.....	1" ANSI
	1.5.....	1.5" ANSI
	2.....	2" ANSI (Other options available)
Flanged Process Connection Rating	150#.....	150# as per B16.5
	300#.....	300# as per B16.5
	600#.....	600# as per B16.5
	900#.....	900# as per B16.5
	1500#.....	1500# as per B16.5
	2500#.....	2500# as per B16.5
Flanged Process Connection Facing	BLRF.....	Blind raised face
	BLRTJ.....	Blind ring type joint
	SORF.....	Slip on raised face
	LPJ.....	Lap joint raised face
Rod Diameter	A.....	Rod Diameter 'A' mm
Diameter 'r' Mm Or Diameter 'K' mm	K.....	Diameter 'R' mm or Diameter 'K' mm
Raised Face Thickness	C.....	Raised Face Thickness 'C' mm
Top End Diameter	B1.....	Top End Diameter 'B1' mm
Hot End Diameter	B.....	Hot End Diameter 'B' mm
Bore ID	d.....	Bore ID 'd' mm
Tip Thickness	t.....	Tip Thickness 't' mm
Options.....		(For options refer table A)

*Please consult our marketing team for any non standard dimensions. Note: For field which are not applicable, select 'XX' or enter '0' whichever is mentioned.

INDIA

PYRO ELECTRIC INSTRUMENTS GOA PVT. LTD.

G/B, Hill Crown, College Road, Mapuca - Goa 403 507 India.

Tel : +91 832 2252719/2264391, Fax : +91 832 2263294, Email : marketing@pyro-electric.in

PYRO ELECTRIC®

✓ We sense it the best

Temperature Flow Heating Level Pressure Disposable Probes

Ordering Example - THERMOCOUPLE

Model No: 460#-MI-2-K-6-20AWG-SS316-IEC584-CJT1001-400-D_IP67-1-HA108-SS316-F316-250-80-150-1/2"-150-RF-28-72-2-26-21-7-6-Op 1A,3A,5A,4B,31A,15B,16B

Model	Suffix Codes	Description
460#TC		460#TC Assembly
Thermocouple Type	MI..... BE.....	Mineral Insulated Ceramic Beaded
Number of Elements	1..... 2..... 3.....	Simplex Duplex Triplex
Element Type	J..... K..... T..... E..... N..... R..... S..... B..... C.....	Iron Constantan Chromel Alumel Copper Constantan Chromel Constantan Nicrosil Nisil PTRH13%_PT PTRH10%_PT PTRH30%_PTRH6% TU 5% Rhenium -TU 26% Rhenium
Sheath Diameter of TC	6..... 8..... 9.5.....	6 mm 8 mm 9.5 mm (For more option refer table F)
Size of Conductor of TC	16AWG..... 18AWG..... 24AWG..... XX.....	1.29032 mm 1.02362 mm 0.51054 mm Not Applicable (For more options refer table C)
Sheath Material for TC	316..... 316L..... 321..... INC 600.....	SS316 SS316L SS321 Inconel 600 (For more options refer table D)
Calibration Standard	ANSIMC96.1..... DIN43710..... IEC60584.....	TC calibration as per ANSIMC 96.1 TC calibration as per DIN 43710 TC calibration as per IEC 60584
Details of CJT	CJT 201..... CJT 1001..... CJT 1005.....	Crimp on Pot and Lead Wire Spring Loaded Terminal Block OD=41 PCD=33(Weatherproof) Spring Loaded Terminal Block Od=41 PCD=33(Flameproof) (For more options refer table G)
Length Below Base Plate (To be specified by Pyro)	X.....	Length Below Base Plate X mm
Head Type	D_IP67..... C.....	Weatherproof with IP67 Certified as per IEC 60529 Flameproof Exd IIC T6,IP67 as per IEC 60079 (For more options refer table H)
Number of Conduit Entries	01-10..... XX.....	Select 2 or 1 for Terminal Head & 1-10 for Junction Box
Head Assembly Type	HA108..... HA112..... HA113.....	Head-3 Piece Extension & T(M) (Made in Barstock) Head-3 Piece Extension with Spring Loading & T(M) Head-3 Piece Extension with Sealing Arrangement & T(M) (For more options refer table E)
Well Material	321..... 316..... INC 600.....	SS 321 SS 316 Inconal 600 (Other options available)
Flange Material	F321..... F316..... F316L.....	SS 321 SS316 SS 316L (Other options available)
Well Insertion Length Below RF/RTJ Collar	U.....	Well Insertion Length Below Flange 'U' mm
Safe Length Below Velocity Collar	U1.....	Well Insertion U1 mm (Write 0 if velocity collar not applicable)
Well Extension Length Including RF/RTJ Collar	T.....	Well extension length including Flange 'T' mm
Head extension length	N.....	Head extension length 'N' mm
Flanged Process Connection Size	1..... 1.5..... 2.....	1" ANSI 1.5" ANSI 2" ANSI (Other options available)
Flanged Process Connection Rating	150#..... 300#..... 600#..... 900#..... 1500#..... 2500#.....	150# as per B16.5 300# as per B16.5 600# as per B16.5 900# as per B16.5 1500# as per B16.5 2500# as per B16.5
Flanged Process Connection Facing	BLRF..... BLRTJ..... SORF..... LPJ.....	Blind raised face Blind ring type joint Slip on raised face Lap joint raised face
Rod Diameter	A.....	Rod Diameter 'A' mm
Dia 'R' mm or Dia 'K' mm	K.....	Wetted part of flange Thickness
Raised Face Thickness	C.....	Raised Face Thickness 'C' mm
Top End Diameter	B1.....	Top End Diameter 'B1' mm
Hot End Diameter	B.....	Hot End Diameter 'B' mm
Bore ID	d.....	Bore ID 'd' mm
Tip Thickness	t.....	Tip Thickness 't' mm
Options.....		(For Options Refer Table A)

*Please consult our marketing team for any non standard dimensions. Note: For field which are not applicable, select 'XX' or enter '0' whichever is mentioned.