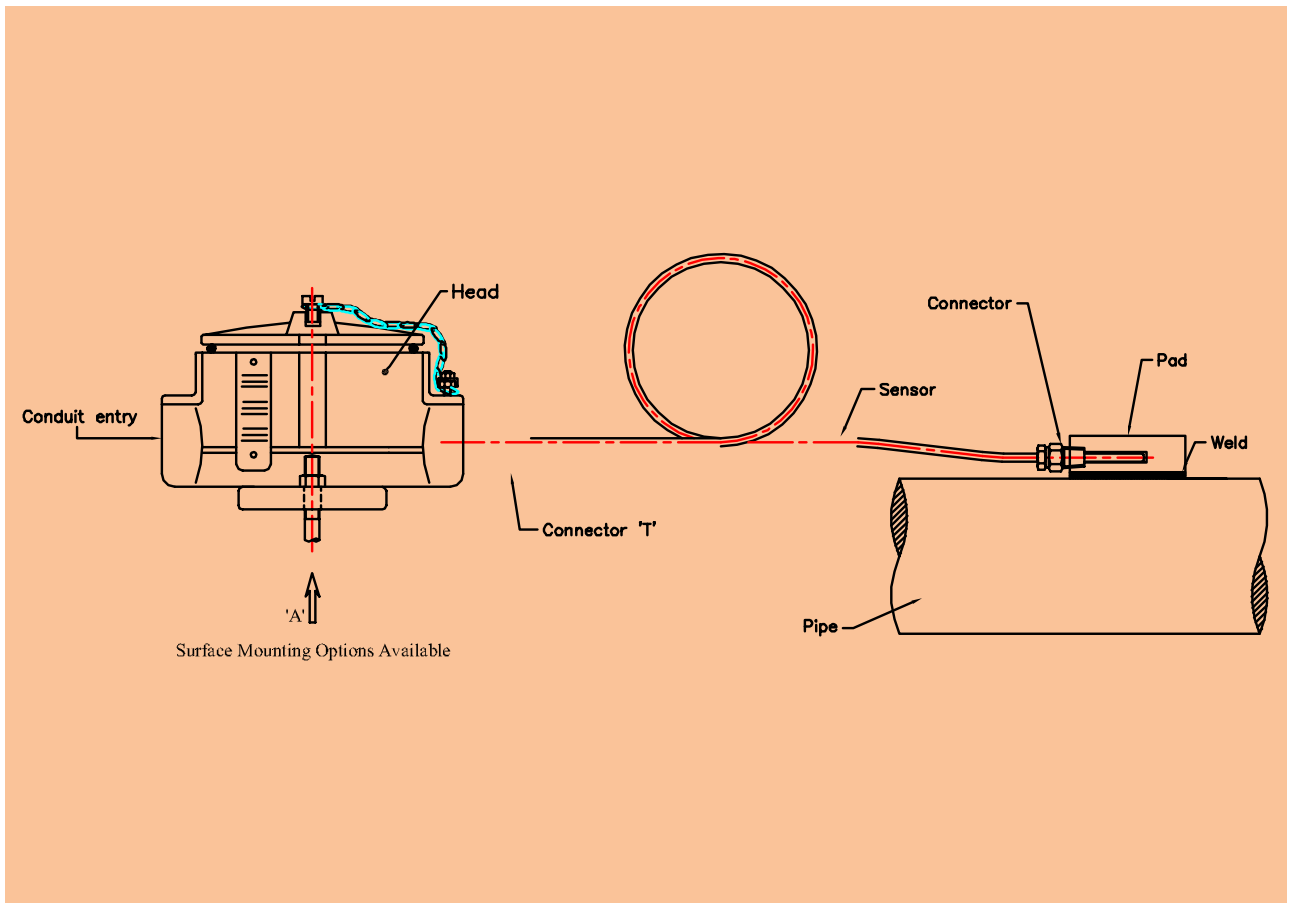


122# Series

- With choice of adjustable connectors.
- Long, pliable MI lead out, where required for intricate installation and high temperature route.
- Weather proof or flame proof execution in 316SS or Aluminum.
- Available with "in head" 2 wire temperature Transmitter.
- Weld pad or "Strap on" pad
- long, pliable MI lead out, ideal for skin temperature measurement for pipe or vessel surface.
- Weather proof execution in SS or Aluminum.
- Available with "in head" 2 wire Temperature Transmitter.
- Bracket mounting or 2" Nb pipe mounting



Ordering Example - RTD

Model NO:122#-2-pt-3W-6-316-IEC751-CJT1001-D-1-HA109-B-1/2"NPT-F-321-1-20-5-321-210-19-1000-OP 0

Model	Suffix Codes	Description
122#RTD	122#RTD Assembly
No of Elements	1..... 2..... 3.....	Simplex Duplex Triplex
Element Type	Pt100A..... Pt100B..... Pt500A..... Pt500B.....	Pt100 RTD Class A tolerance Pt100 RTD Class B tolerance Pt500 RTD Class A tolerance Pt500 RTD Class B tolerance
Number of Wires	2W..... 3W..... 4W.....	2 Wire RTD 3 Wire RTD 4 Wire RTD
Sheath Diameter	3..... 6..... 8..... 10.....	3 mm DIA 6 mm DIA 8 mm DIA 10 mm DIA
Sheath Material	316..... 316L..... 321..... INC 600..... Other Options Available	SS316 SS316L SS321 INCONEL 600
Calibration Standard	DIN43760..... IEC751.....	RTD calibration DIN 43760 RTD calibration IEC 60751
CJT Details	CJT 201..... CJT 301..... CJT 1001.....	Crimp on Pot and Lead Wire Brazed Pot & ADJ Com Fitting Spring Loaded Terminal Block OD=41 PCD=33(Water proof)
Head Type	D_IP67..... C..... C_ATEX..... JC..... XX.....	Weatherproof with IP67 Certified Flameproof IIC ,IP67 Flameproof IIC with ATEX Certificate Junction Box FLP IIC, XX
Number of Conduit Entries	1..... 2..... XX.....	Single Entry Two Entries XX
Head Assembly Type	Ha101..... Ha109.....	Head Only with T(F) Head with Adjustable Compression Fitting
Head Extension 121/122/123/124	S..... B..... P.....	Surface Mounting for Junction Box Bracket Mounting for Head 2" NB Pipe Mounting
Mounting Threads T	T-1/4NPTM..... T-1/4ETM.....	1/4" NPT(M) 1/4" ET(M)
Weld Pad Style	D..... E..... F.....	TC INSERT IN SLOT & TIG WELDED TC CRIMPED TO TUBE & PAD WELDED TC FIXED TO PAD THROUGH A CONN
Pad Material	SS316..... SS304..... Other Options Available.....	SS316 SS304
Pad Dimension	K..... L..... Other Options Available	30x30x50 25x25x50
Weld Clamp Material	321..... 310.....	SS321 SS304
Weld Clamp Installation Type	1..... 2.....	PARALLEL TO TUBE AXIS PERPENDICULAR TO TUBE AXIS
Weld Clamp Width	0-50.....	Weld Clamp Width
Weld Clamp Thickness	0-100.....	Weld Clamp Thickness
Shield Material	326..... 321..... Other Options Available	SS316 SS321
Shield Installation Type	1..... 2.....	PARALLEL TO TUBE AXIS PERPENDICULAR TO TUBE AXIS
Guide Tube OD mm	0-5000.....	Guide Tube OD mm
Heater Tube OD mm	0-5000.....	Heater Tube OD mm
Overall Length OL mm	0-5000.....	Overall Length OL mm
Options.....	Please Refer Option List



Ordering Example - THERMOCOUPLE

Model NO:122#MI-2-K-8-20-316-CJT1001-C-1-HA109-B-1.2NPT-F-316-D316-1-200-10-316-1-210-19-8000-Op 16

Model	Suffix Codes	Description
122#TC		122#TC Assembly
Insulation	MI..... BE.....	Mineral Insulated Ceramic Beaded
Number of Elements	1..... 2.....	Simplex Duplex
Element Type	J..... K..... T..... E..... N..... R.....	Iron Constantan Chromel Alumel Copper Constantan Chromel Constantan Nicrosil Nisil PtRh13%_Pt
Sheath Diameter of TC	4..... 6..... 8..... 9.5..... Other Options Available	4 mm DIA 6 mm DIA 8 mm DIA 9.5 mm DIA
Size Conductor of TC	7AWG 8AWG	3.66522 mm 3.2639 mm
Sheath Material for TC	316..... 316L..... 321.....	Ss316 SS316L Ss321
Calibration Standard	ANSIMC96.1..... DIN43710..... IEC60584.....	TC calibration as per ANSIMC 96.1 TC calibration as per DIN 43710 TC calibration as per IEC 60584
Details of CJT	CJT 201..... CJT 1001.....	Crimp on Pot and Lead Wire Spring Loaded Terminal Block OD=41 PCD=33
Head Type	D_IP67..... C..... C_CCOE..... JD..... JC.....	Weatherproof with IP67 Certified Flameproof IIC T6,IP67 Flameproof IIC T6,IP65 Junction Box WP Junction Box FLP IIC
Number of Conduit Entries	1..... 2..... 3..... XX.....	SINGLE ENTRY TWO ENTRIES THREE ENTRIES
Head Assembly Type	Ha101..... Ha109..... XX.....	Head only with T(F) Head with Adjustable Compression Fitting XX
Head Extension121/122/123/124	S..... B..... P..... L..... LN.....	Surface Mounting for Junction Box Bracket Mounting for Head 2" NB Pipe Mounting Local Mounting without Bracket Local Mounting with Extension Nipple
Mounting Threads T	T-1/4NPTM..... T-1/4NPSM..... XX..... Other Options Available	1/4" NPT(M) 1/4" NPS(M) XX
Weld Pad Style	D..... E..... F.....	TC INSERT IN SLOT & TIG WELDED TC CRIMPED TO TUBE & PAD WELDED TC FIXED TO PAD THROUGH A CONN
Pad Material	SS316 SS304 Other Options Available.....	SS316 SS304
Pad Dimension	K..... L..... Other Options Available	30x30x50 25x25x50
Weld Clamp Material	321..... 310.....	SS321 SS304
Weld Clamp Installation Type	1..... 2.....	PARALLEL TO TUBE AXIS PERPENDICULAR TO TUBE AXIS
Weld Clamp Width	0-50.....	Weld Clamp Width
Weld Clamp Thickness	0-100.....	Weld Clamp Thickness
Shield Material	326..... 321..... Other Options Available	SS316 SS321
Shield Installation Type	1..... 2.....	PARALLEL TO TUBE AXIS PERPENDICULAR TO TUBE AXIS
Guide Tube OD mm	0-5000.....	Guide Tube OD mm
Heater Tube OD mm	0-5000.....	Heater Tube OD mm
Overall Length OL mm	0-5000.....	Overall Length OL mm
Option.....		Please Refer Option List

INDIA

PYRO ELECTRIC INSTRUMENTS GOA PVT. LTD.

G/B, Hill Crown, College Road, Mapuca - Goa 403 507 India.

Tel : +91 832 2252719/2264391, Fax : +91 832 2263294, Email : marketing@pyro-electric.in



PYRO ELECTRIC®

We sense it the best

Temperature • Flow • Heating • Level • Pressure • Disposable Probes