

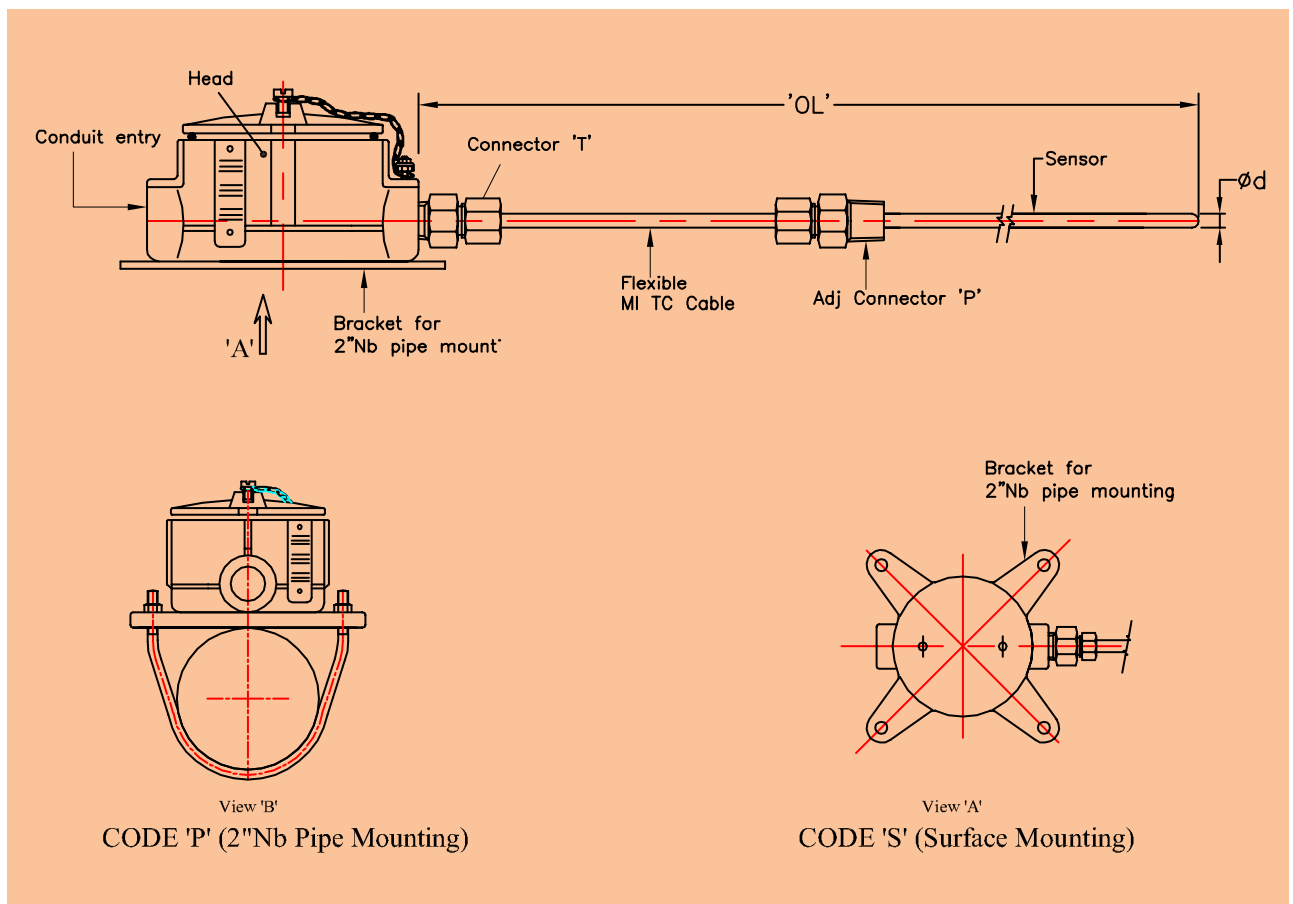
# 120# Series

- Suitable as replacement for existing installations.
- Various head assembly types to choose from.
- Certified for use in hazardous area.
- Terminal head in die cast Al or in SS316.

MI Thermocouple or Resistance Thermometers can be provided with a long MI lead out cable to enable its usage in intricate installations and in high temperature environment.

Typical applications are turbine casing, SH/RH and drum metal temperature measurements in Power plants and measurement of temperature in high temperature applications in Fertiliser and Petrochemical Plants.

These Thermocouples can be provided with suitable connectors, weld pads and other accessories for particular use. Thermocouples are provided with ungrounded junction unless specified otherwise.



Ordering Example - RTD

Model NO:120#-2-Pt100B-3W-6-316-IEC751-CJT201-D\_IP67-2-HA101-L-0-400-1/2"BSP(M)-1/2"NPT(M)-1A,3B,5A,5AA,14B

Model	Suffix Codes	Description
120#RTD	.....	120#RTD Assembly
No of Elements	1.....	Simplex
	2.....	Duplex
	3.....	Triplex
Element Type	Pt100A.....	Pt100 RTD Class A tolerance
	Pt100B.....	Pt100 RTD Class B tolerance
	Pt200A.....	Pt200 RTD Class A tolerance
	Pt200B.....	Pt200 RTD Class B tolerance
	Pt500A.....	Pt500 RTD Class A tolerance
	Pt500B.....	Pt500 RTD Class B tolerance
Number of Wires	2W.....	2 Wire RTD
	3W.....	3 Wire RTD
	4W.....	4 Wire RTD
Sheath Diameter	6.....	6 mm
	8.....	8 mm
	10.....	10 mm (For more options refer table F )
Sheath Material	316.....	SS316
	316L.....	SS316L
	321.....	SS321
	INC 600.....	INCONEL 600
Calibration Standard	DIN43760.....	RTD calibration DIN 43760
	IEC751.....	RTD calibration IEC 60751
CJT Details	CJT 201.....	Crimp on Pot and Lead Wire
	CJT 1001.....	Spring Loaded Terminal Block OD=41 PCD=33 (Weatherproof)
	CJT 1005.....	Spring Loaded Terminal Block Od=41 PCD=33(Flameproof) (For more options refer table G)
Head Type	D_IP67.....	Weatherproof with IP67 Certified as per IEC 60529
	C.....	Flameproof Exd IIC T6,IP67 as per IEC 60079 (For more options refer table H)
Number of Conduit Entries	01-10.....	...Select 2 or 1 for Terminal Head & 1-10 for Junction Box
	XX.....	Not Applicable
Head Assembly Type	HA101.....	Head Only with T(F)
	HA109.....	Head with Adjustable Compression Fitting (For more options refer table E)
Mounting Head Extension	S.....	Surface Mounting for Junction Box
	B.....	Bracket Mounting for Head
	P.....	2" NB Pipe Mounting
	L.....	Local Mounting without Bracket
	LN.....	Local Mounting with Extension Nipple
Length of Insertion*	E.....	Element Length Along the Pipe MM
Length of Insert/probe*	OL.....	Length of Insert/Probe OL MM
Mounting Threads T	T-1/4NPTM.....	1/4" NPT(M)
	T-1/4NPSM.....	1/4" NPS(M)
	T-1/4ETM.....	1/4" ET(M) (For more options refer table B)
Mounting Threads P	P-1/4NPTM.....	1/4" NPT(M)
	P-1/4NPSM.....	1/4" NPS(M)
	P-1/4ETM.....	1/4" ET(M) (For more options refer table B)
Options.....		(For options refer table A)

\*Please consult our marketing team for any non standard dimensions.

Note:-For field which are not applicable, select 'XX' or enter '0' whichever is mentioned.

Ordering Example - THERMOCOUPLE

Model NO:120#-MI-2-K-6-20AWG-316-IEC584-CJT201-D\_IP67-2-HA101-L-0-400-1/2"BSP(M)-1/2"NPT(M)-1A,3B,5A,5AA,15A,16B

Model	Suffix Codes	Description
120#TC		120#TC Assembly
Insulation Type	MI.....	Mineral Insulated
	BE.....	Ceramic Beaded
Number of Elements	1.....	Simplex
	2.....	Duplex
	3.....	Triplex
	4.....	Four
	6.....	Six
	9.....	Nine
Element Type	J.....	Iron Constantan
	K.....	Chromel Alumel
	T.....	Copper Constantan
	E.....	Chromel Constantan
	N.....	Nicrosil Nisil
	R.....	PtRh13%_Pt
	S.....	PtRh10%_Pt
	C.....	Tugstan 5% Rhenium –Tugstan 26% Rhenium
Sheath Diameter of TC	6.....	6 mm
	8.....	8 mm
	9.5.....	9.5 mm (For more options refer table F)
Size of Conductor of TC	16AWG.....	1.29032 mm
	18AWG.....	1.02362 mm
	24AWG.....	0.51054 mm
	XX.....	Not Applicable (For more options refer table C)
Sheath Material for TC	316.....	SS316
	316L.....	SS316L
	321.....	SS321
	INC 600.....	Inconel 600 (For more options refer table D)
Calibration Standard	ANSIMC96.1.....	TC calibration as per ANSIMC 96.1
	DIN43710.....	TC calibration as per DIN 43710
	IEC60584.....	TC calibration as per IEC 60584
Details of CJT	CJT 201.....	Crimp on Pot and Lead Wire
	CJT 1001.....	Spring Loaded Terminal Block OD=41 PCD=33(Weatherproof)
	CJT 1005.....	Spring Loaded Terminal Block Od=41 PCD=33(Flameproof) (For more options refer table G)
Head Type	D_IP67.....	Weatherproof with IP67 Certified as per IEC 60529
	C.....	Flameproof Exd IIC T6,IP67 as per IEC 60079 (For more options refer table H)
Number of Conduit Entries	01-10.....	Select 2 or 1 for Terminal Head & 1-10 for Junction Box
	XX.....	Not Applicable
Head Assembly Type	HA101.....	Head only with T(F)
	HA109.....	Head with Adjustable Compression Fitting (For more options refer table E)
Mounting Head Extension	S.....	Surface Mounting for Junction Box
	B.....	Bracket Mounting for Head
	P.....	2" NB Pipe Mounting
	L.....	Local Mounting without Bracket
	LN.....	Local Mounting with Extension Nipple
Length of Insertion*	E.....	Element Length Along the Pipe MM
Length of Insert/probe*	OL.....	Length of Insert/Probe OL MM
Mounting Threads T	T-1/4NPTM.....	1/4" NPT(M)
	T-1/4NPSM.....	1/4" NPS(M)
	T-1/4ETM.....	1/4" ET(M) (For more options refer table B)
Mounting Threads P	P-1/4NPTM.....	1/4" NPT(M)
	P-1/4NPSM.....	1/4" NPS(M)
	P-1/4ETM.....	1/4" ET(M) (For more options refer table B)
Options.....		(For options refer table A)

\*Please consult our marketing team for any non standard dimensions.

Note: For field which are not applicable, select 'XX' or enter '0' whichever is mentioned.